



## New Product Showcase: Highly Accurate Thermographic Cameras

### Common Features

- All Bi-spectrum (Thermal & Optical)
- Accuracy:  $\pm 0.5^{\circ}\text{C}$  ( $0.9^{\circ}\text{F}$ )**
- Bi-spectrum thermal-optical image fusion
- Automatic image capture and upload
- Stable **indoor** and windless environment use only (Working Temperature  $59^{\circ}$  to  $95^{\circ}$  F)



DS-2TP21B-6AVF/W

- Thermal Resolution:  $160 \times 120$**
- 8 MP Optical Camera
- Bluetooth, Wi-Fi
- Touchscreen
- Measurement Range:
  - 6 mm Lens: 1.5–2.5 m
- Tripod ready
- Color Highlight Alarm and Audio Alarm



DS-2TD2617B-6/PA

- Thermal Resolution:  $160 \times 120$**
- 4 MP Optical Camera
- Measurement Range:
  - 6 mm Lens: 1.5–3.0 m
- Tripod Adapter: DS-2909ZJ (not included)
- Audio alarm



DS-2TD2636B-13/P

- Thermal Resolution:  $384 \times 288$**
- 4 MP Optical Camera
- Measurement Range:
  - 13 mm Lens: 2.5–7.0 m
- Tripod Adapter: DS-2909ZJ (not included)



DS-2TD1217B-3/PA

- Thermal Resolution:  $160 \times 120$**
- 4 MP Optical Camera
- Measurement Range:
  - 3 mm Lens: 0.8–1.5 m
- Tripod Adapter: DS-2908ZJ (not included)
- Audio alarm



### Accessory

**standard 1/4"-20 Tripod DS-2907ZJ** (sold separately)

- standard 1/4"-20 (Can be purchase elsewhere)



**Turret Tripod adapter DS-2908ZJ** (sold separately)

- Connection between 1/4"-20 tripod and turret camera



**Bullet Tripod adapter DS-2909ZJ** (sold separately)

- Connection between 1/4"-20 tripod and Bullet camera



## Short/Mid-Range Solutions with TD1217B and TD2617B



### Solution Composition:

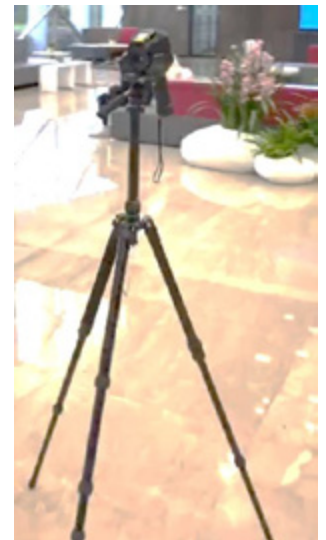
Professional thermographic handheld camera + tripod (optional)

### Solution Advantages:

- Camera **connects via Wi-Fi** with PC / Mobile client
- Carry in hand or mount on a tripod for **mobile measurement**
- Embedded audio alarm** can immediately notify operators of temperature alarm
- Touch screen provides ease of use
- Accuracy of  $\pm 0.5^{\circ}\text{C}$  ( $\pm 0.9^{\circ}\text{F}$ )
- Integrated 8 MP optical camera** satisfies normal monitoring requirement

### Set Up Tips:

- Measure from about **1.5 to 2.5 m away**
- Set up the solution in a stable **indoor** environment without wind or direct sunlight
- Power on for 5 minutes before measuring



## Models, Differences and Price

Form Factor	Model name	Thermal Resolution	Thermal Lens	Detection Distance	FOV
Turret	DS-2TD1217B-3/PA	160 × 120	3mm	0.8-1.5m	50° × 37.2°
Bullet	DS-2TD2617B-6/PA	160 × 120	6mm	1.5-3.0m	25° × 18.7°
	DS-2TD2636B-13/P	384 × 288	13mm	2.5-7.0m	28.8° × 21.6°
Handheld	DS-2TP21B-6AVF/W	160 × 120	6mm	1.5-2.5m	25° × 18.7°

Please focus on DS-2TD1217B-3/PA and DS-2TD2617B-6/PA, where the production capacity is high

New Accessories	Details
DS-2907ZJ	Standard 1/4"-20 Tripod
DS-2908ZJ	Tripod Adapter for Thermal Turret camera
DS-2909ZJ	Tripod Adapter for Thermal Bullet camera

\* Above Accessories are **not** included in the camera box.

\* Tripod also can be purchased elsewhere. (standard 1/4"-20 tripod)

# Thank you!

To learn more, please  
contact the ePaul team:

quotes@epauldynamics.com

t: 516.753.9350  
f: 516.874.5836

www.epauldynamics.com



**ePaul Dynamics**

INTEGRATING BUSINESS TO BUSINESS

